

BOB HOYE
MARCH 2022

Climate Update: March 2022

The best way to refute ardent but unfounded belief systems is with the reality of solid evidence over a long time, best presented by charts. Charts that have not been altered to fit today’s powerful political persuasions. Actually today’s trashing of science has been unseen since the Vatican condemned anyone who showed that the Universe did not rotate around the Earth.

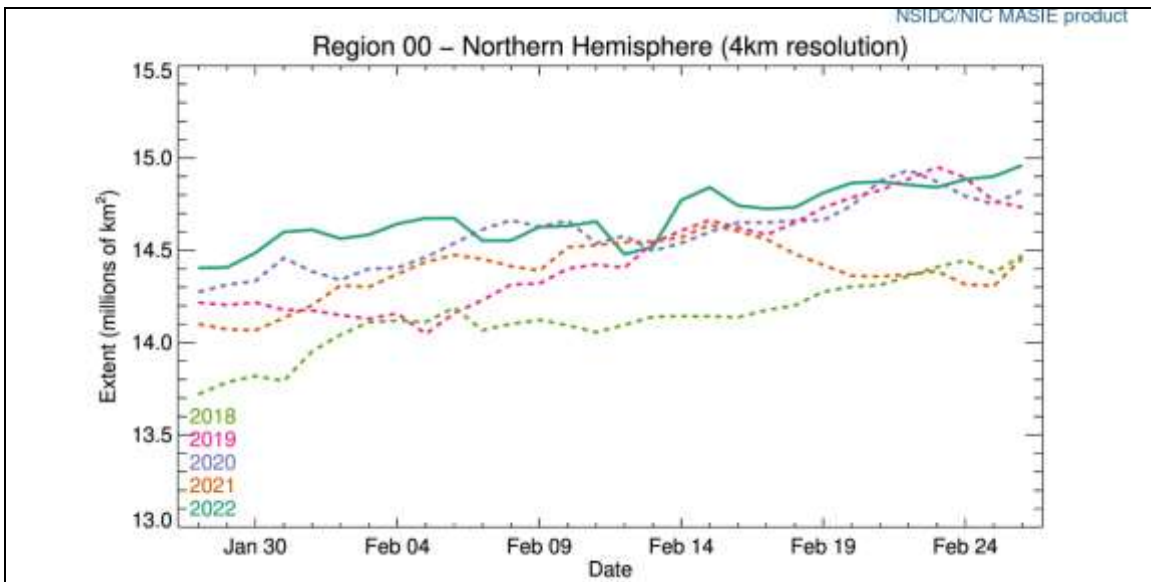
“Arctic Summers Ice Free By 2013”, was headlined by BBC News on December 17, 2007.

Then, just last November these were headlines:

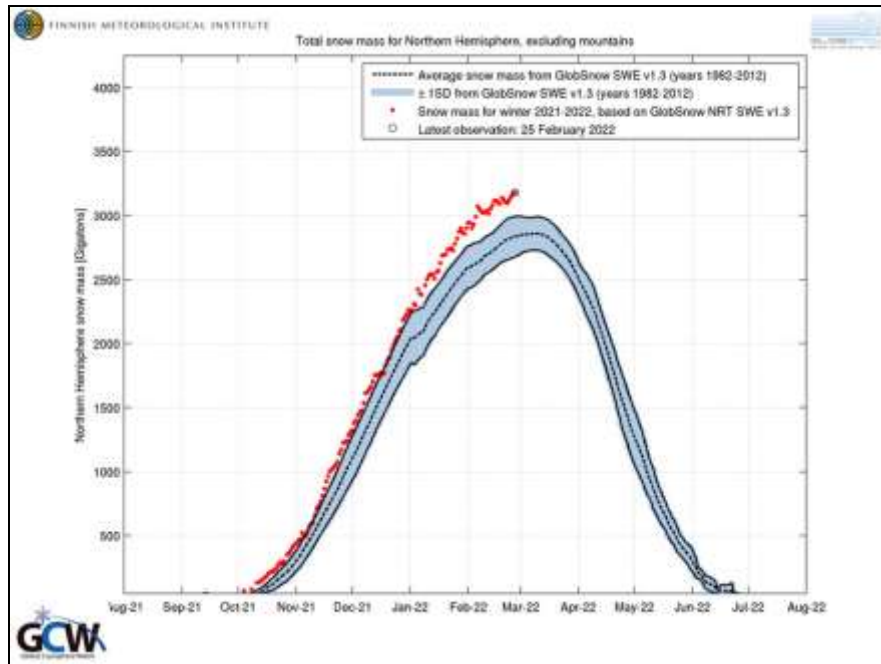
“Dozens of Ships Stuck in Arctic as Ice Freezes Early” – *The Telegraph*.

“Pelosi Admits Massive Climate Spending Is A ‘Religious Thing’” – *Zero Hedge*.

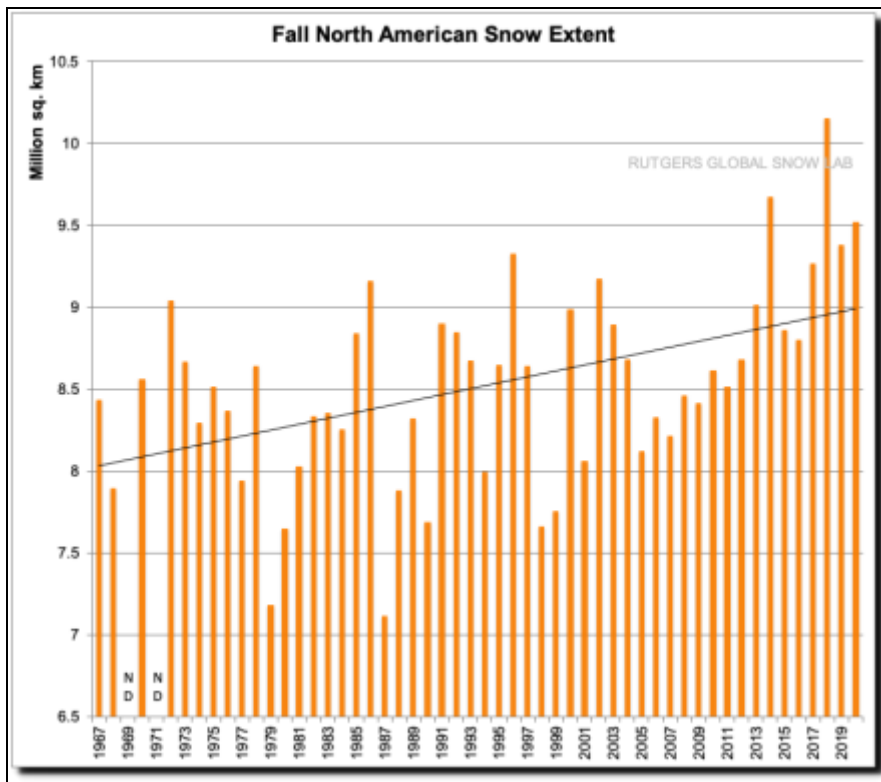
The first chart shows that Sea Ice Extent for the winter season to date is at its highest on plots back to 2018:



The next chart records that the Northern Hemisphere's Snow Mass is well above the Standard Deviation Band:



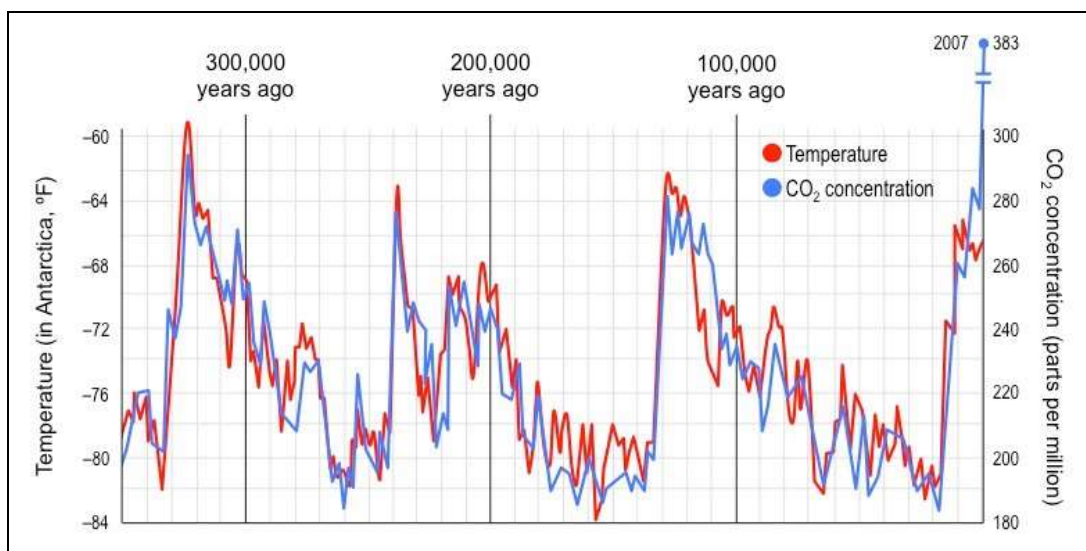
And the next chart records the trend for the Fall North American Snow Extent:



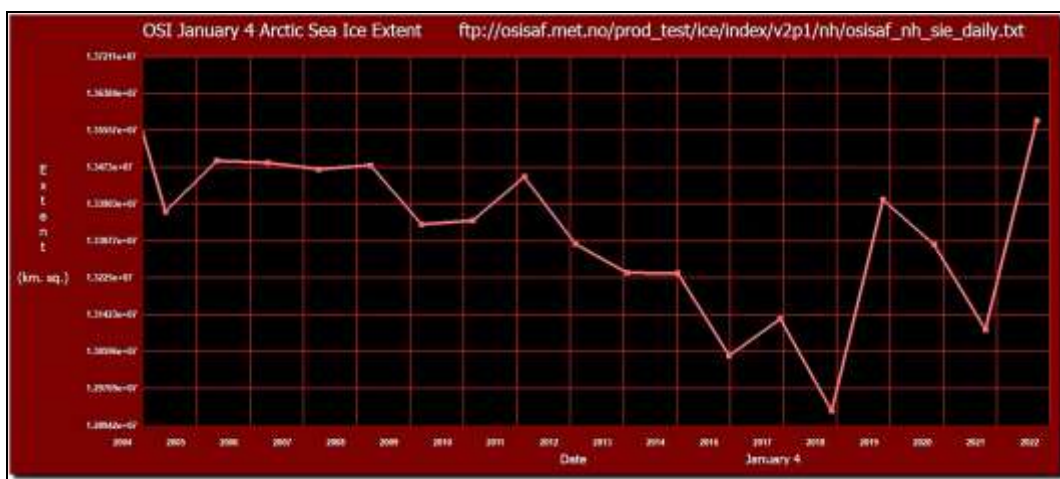
Now the widely-promoted climate hysteria has been a variation on the ancient accusations that mankind is evil, only updated such that modern society's emissions of CO2 are causing global warming. And if that isn't far-fetched enough – for the first time in geological history warming is a threat to life on our planet. That has been typically hospitable during our lengthy warming period since the last ice age.

During the Little Ice Age cooling trend the 1500s recorded some year-round nasty weather forcing many crop failures and famines. It was widely accepted that witches “caused” bad weather and learned magistrates in northern Europe tried and executed thousands of them. Today, a broader brush condemns all, including children, for causing bad weather. By just as learned magistrates.

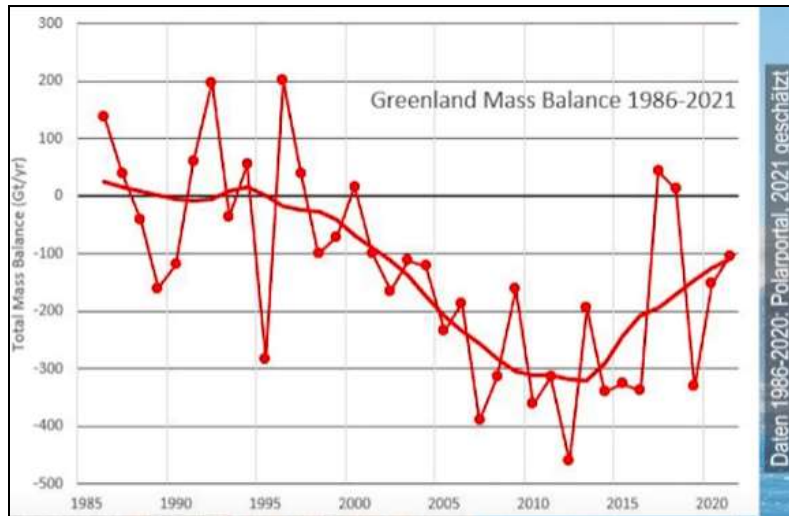
The next chart is the Vostok chart that covers some 400,000 years, that when detailed shows that the turns to climate warming lead CO2 and vice versa.



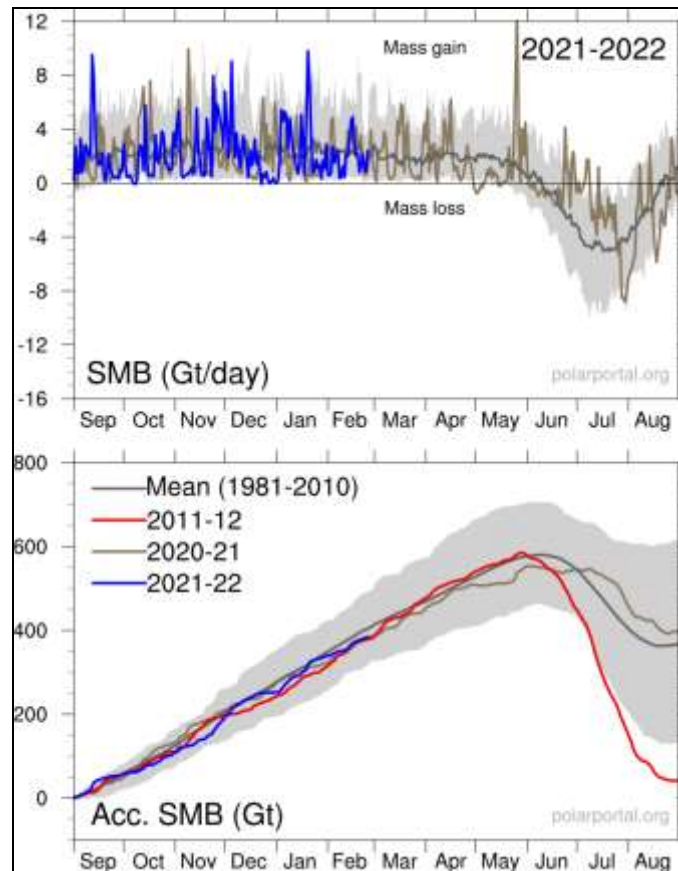
The next chart displays Sea Ice Extent post for January 4th, since 2004:



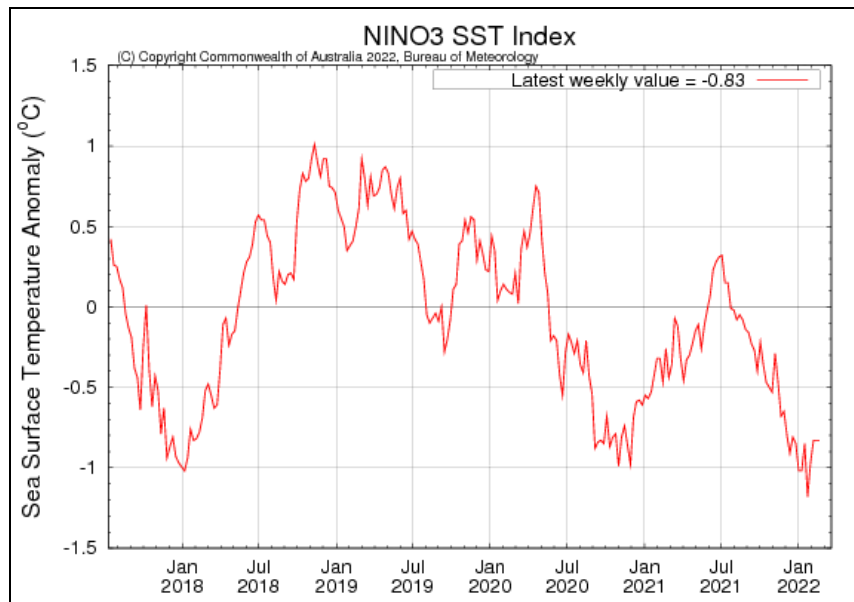
The sixth chart shows that Greenland's Mass Balance of ice has been growing over the last decade:



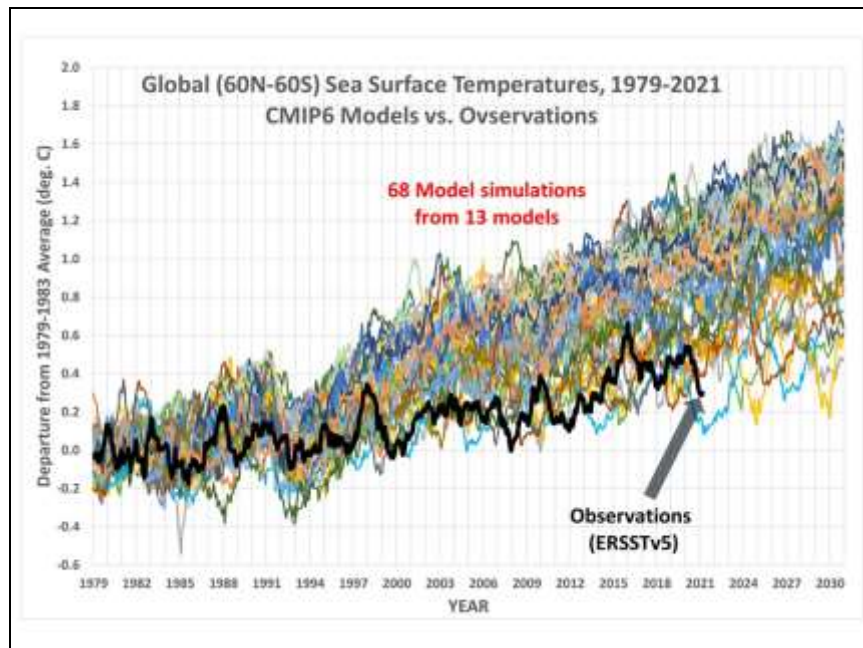
And the following chart shows that Greenland's Snow Mass Balance for this season is "normal":



One of the nearer-term influences upon temps has been ENSO, or more popularly understood as the warming of an El Nino, or the cooling of a La Nina. The latter has been forcing its cooling influence since the El Nino peaked in 2016.



And the last chart records a number of temperature “forecasts” by modeling against the most accepted record of temperature. To bring it up to date the posting for January was +0.03 C. From the peak at +0.70 C with the El Nino of 2016, the drop to essentially zero makes the trend unchanged for some 6 years.



Making the point, the following cartoon illustrates the manipulation behind the climate promotion:

